



# NEW PRODUCTS 2023

In the dealer price list 01-23 A

\* CO<sub>2</sub>-neutral as standard for all garage doors, operators, entrance doors, residential internal doors, steel frames, steel doors for residential construction as well as storage space systems



# We think green.

Hörmann leads by example: We use green electricity to cover 100% of our electricity requirements at all European production sites. Together with an intelligent and certified energy management system, the use of recycled paper, the saving and upcycling of packaging and the recycling of reusable materials, this saves over 75000 tons of CO<sub>2</sub> each year. Additionally, we offset the remaining unavoidable emissions generated during our production of products for residential construction by supporting renewable energy, forest protection and reforestation projects in cooperation with ClimatePartner.



You can find all information and many videos at [www.hormann.co.uk/company/environment](http://www.hormann.co.uk/company/environment)

Only from Hörmann

**WE ACT GREEN.** Our climate protection strategy is based on the annual calculation of the CO<sub>2</sub> balance at our sites, which includes the products manufactured there. And we have been reducing our emissions wherever possible for years. This means we are taking various steps, big and small, to reduce our carbon footprint. We offset the remaining CO<sub>2</sub> emissions through climate protection projects. This makes us the first and only construction component manufacturer to offer CO<sub>2</sub>-neutral garage doors, entrance doors and residential internal doors.



# As standard

For all garage doors, operators, entrance doors, residential internal doors, steel frames, steel doors for residential construction as well as storage space systems



**ClimatePartner**  
certified product  
[climate-id.com/XNEBKC](https://climate-id.com/XNEBKC)



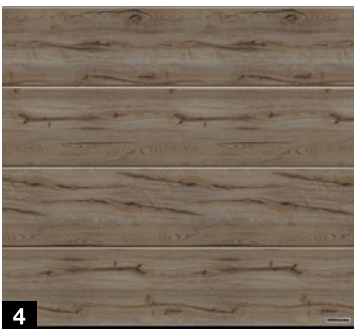
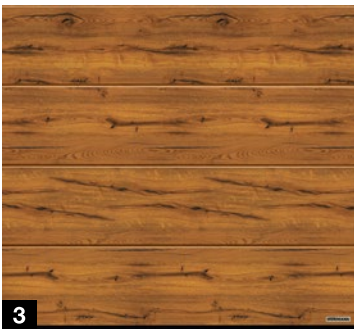
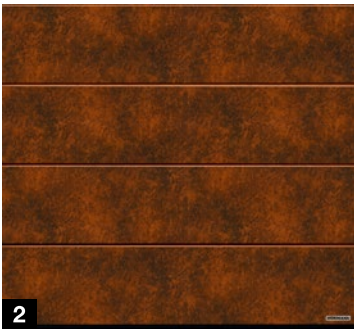
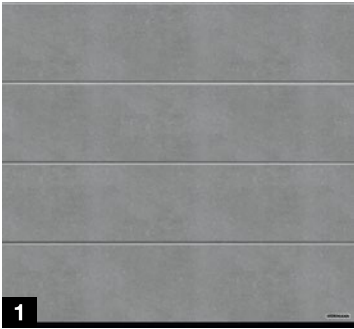
CO<sub>2</sub>  
measure  
reduce  
contribute

# New Duragrain decors

Modern, natural, matching

---





Available from 01.06.2023

## DURAGRAIN DECORS WITH A MATCHING LOOK

Elegant combination – modern door appearances and aluminium entrance doors

- Five exclusive decors for discerning design requirements
- In a matching look with aluminium entrance doors ThermoSafe Decoral
- Long-lasting beautiful door appearance thanks to Duragrain final coating
- Available for sectional garage doors LPU 42 and side doors as well as hinged garage doors DFT 42 with L-ribbing



Dealer price list 01-23 A

### Sectional garage doors section

Product descriptions

**Page 91** Sectional garage doors LPU 42

**Page 227** Side doors NT 60 with corner frame, single-leaf

**Page 233** Side doors NT 60 with block frame, single-leaf

**Page 239** Side doors NT 60 with block frame, double-leaf



Dealer price list 01-23 A

### Hinged garage doors section

**Page 351** Product description for hinged garage doors DFT 42



**Duragrain**

Extremely scratch-resistant



**Matching**

With ThermoSafe entrance doors

- 1** Cement
- 2** Rusty Patina
- 3** Barnwood
- 4** Barnwood grey
- 5** Wild Oak

# New Duragrain decors

Modern, natural, matching

Available from 01.06.2023



**Duragrain**  
Extremely scratch-resistant

## DURAGRAIN NEW MALT OAK DECOR

- Exclusive decors for discerning design requirements
- Long-lasting beautiful door appearance thanks to Duragrain final coating
- Available for sectional garage doors LPU 42 and side doors as well as hinged garage doors DFT 42 with L-ribbing



Dealer price list 01-23 A

### Sectional garage doors section

Product descriptions

- Page 91** Sectional garage doors LPU 42  
**Page 227** Side doors NT 60 with corner frame, single-leaf  
**Page 233** Side doors NT 60 with block frame, single-leaf  
**Page 239** Side doors NT 60 with block frame, double-leaf



Dealer price list 01-23 A

### Side sliding sectional doors section

- Page 277** Product description for side sliding sectional doors HST 42  
**Pages 292 – 293** Side sliding sectional doors HST 42 with L-ribbed Duragrain, manually operated version  
**Pages 304 – 305** Side sliding sectional doors HST 42 with L-ribbed Duragrain, operator-driven version  
**Page 308** Fixed elements  
**Page 329** Product description for side doors NT 60 with corner frame, single-leaf  
**Page 333** Product description for side doors NT 60 with block frame, single-leaf  
**Page 339** Product description for side doors NT 60 with block frame, double-leaf  
**Pages 342 – 345** Size range and prices for side doors NT 60



Dealer price list 01-23 A

### Hinged garage doors section

- Page 351** Product description for hinged garage doors DFT 42

# Sectional garage doors

Individual, exclusive, harmonious



Available from 01.06.2023

## MATCHING DURAGRAIN DECORS DOWN TO THE FINEST DETAIL

Overall harmonious appearance thanks to decor printing

- Fascia panel **1** as standard on the door section decor
- Optional matching frame covering **2** or fascia frame set
- Available for LPU 42 sectional garage doors with L-ribbing and Duragrain surface finish as well as side doors NT 60 and DFT 42 with L-ribbing



Dealer price list 01-23 A

### Sectional garage doors section

Page 89

**1** Product description for sectional garage doors LPU 42

Page 152

**2** Frame covering (angle section) for sectional garage doors LPU 42

Page 154

Single wall panel for sectional garage doors LPU 42

Page 166

Fascia frame set for sectional garage doors LPU 42

# Sectional garage doors

Individual, exclusive, harmonious

---

Available from 01.06.2023

## NEW GRID HEIGHTS FOR LPU 42 AND LPU 67 THERMO

- Door heights (RM height) changed by reducing the available section heights

Section height 468 mm = RM height 1875 dropped

Section height 525 mm = RM height 2625 dropped

Section height 479 mm = RM height 2875 dropped

Section height 488 mm = RM height 1955 dropped

**NEW:** Section height 475 mm = RM height 1900 mm

**NEW:** Section height 520 mm = RM height 2600 mm

**NEW:** Section height 475 mm = RM height 2850 mm

- Uniform section heights for all surface finishes
- Easier to change surface finishes during the offer phase
- New standard grid closes any gaps in the special size range



Dealer price list 01-23 A

### Sectional garage doors section

**Page 102**

Size ranges and prices for track applications LPU 42

**Pages 106 – 119**

Sectional garage doors LPU 42 in standard sizes

**Pages 124 – 132**

Sectional garage doors LPU 42 in special sizes

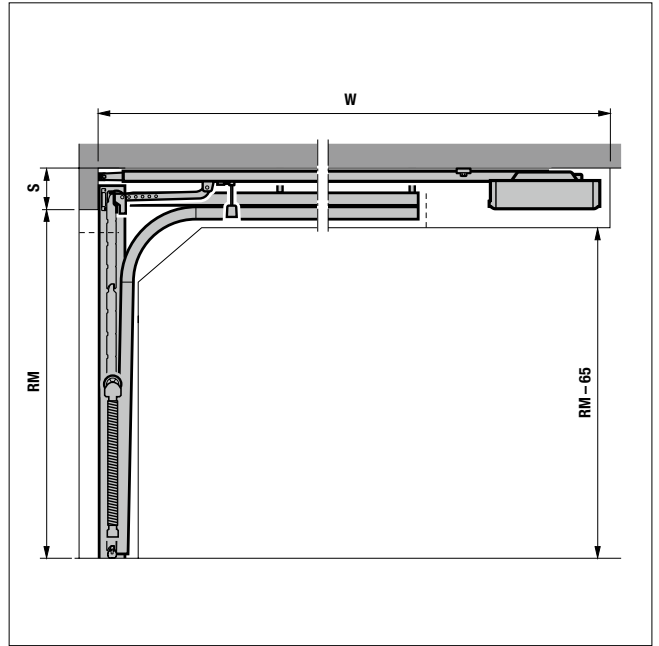
**Page 209**

Size ranges and prices for track applications LPU 67 Thermo

**Pages 210 – 213**

Sectional garage doors LPU 67 Thermo in special sizes





Available from 01.06.2023

## DOORS WITH WICKET DOOR WITH TENSION SPRING ASSEMBLY

Convenient access even when space is tight in modernisation projects

- Headroom (S) of just 125 mm required instead of 210 mm with track application N
- Less distance back (W) than a track application L without operator
- Central arrangement of the wicket door
- Available for LPU 42 sectional garage doors up to 3000 mm door width with 85 mm high threshold or up to 2500 mm door width with trip-free threshold



Dealer price list 01-23 A

### Sectional garage doors section

<b>Page 140</b>	Prices for wicket doors
<b>Page 140</b>	Product description for wicket door with trip-free threshold for sectional garage doors LPU 42
<b>Page 142</b>	Product description for wicket door with threshold for sectional garage doors LPU 42
<b>Pages 143 – 144</b>	Optional extras for wicket doors

# Sectional garage doors

Individual, exclusive, harmonious



Available from 01.06.2023

## PREMIUMPLUS LPU 42 AND SIDE DOORS NT 60

All-round protection to minimize corrosion in coastal climates

- Panel exterior with final coating with painted cut edges
- Painted door hardware, tracks and connection rails in Grey white RAL 9002
- Ribbing infill profiles for improved sealing at section transitions and in ribbing area (for S-, M- and D-ribbing)
- Available for all sectional garage doors LPU 42 and side doors NT 60 with block frame, profile type 2, single-leaf and double-leaf with the Woodgrain, Slategrain and Silkgrain surface finishes



Dealer price list 01-23 A

### Sectional garage doors section

<b>Page 89</b>	Product description for sectional garage doors LPU 42
<b>Pages 106 – 132</b>	Sectional garage doors LPU 42 with Woodgrain, Slategrain or Silkgrain surface finish
<b>Page 233</b>	Product description for side doors NT 60 with block frame, profile type 2, single-leaf
<b>Page 249</b>	Side doors NT 60 with block frame, profile type 2, single-leaf, fitting in the opening, S- / M-ribbing
<b>Page 241</b>	Side doors NT 60 with block frame, profile type 2, single-leaf, fitting in the opening, L-ribbing
<b>Page 238</b>	Product description for side doors NT 60 with block frame, profile type 2, double-leaf
<b>Pages 254 – 256</b>	Side doors NT 60 with block frame, profile type 2, double-leaf, fitting in the opening, S- / M- / L- / D-ribbing



Available from 01.10.2023

## ART 42 VITRAPLAN

Engaging mix of transparency and reflection

- Surface-mounted, flush-fitting glazing in grey
- Concealed aluminium frame profiles with matching colour (from standard profile) in Jet black RAL 9005
- Door leaf reinforcements and hinges in Jet black RAL 9005
- Exclusive door appearance for modern residential buildings
- Available up to door width 4000 mm and door height 3000 mm



Dealer price list 01-23 A

### Sectional garage doors section

**From page 176** Product description for sectional garage doors ART 42 Vitraplan

**From page 184** Size range and prices for sectional garage doors ART 42 Vitraplan

# Side sliding sectional doors

Convenient, simple, transparent



Available from 01.06.2023

## DOORS WITH WICKET DOOR

Freely selectable convenient passage

- Free choice of door position (with the exception of the two outer sections on the closing or curve side)
- Opening outwards or inwards
- Identical construction to wicket doors on sectional garage doors with the same fittings and equipment (multi-point locking not possible)
- Only 60 mm high thresholds
- For all side sliding sectional doors HST 42



Dealer price list 01-23 A

### Side sliding sectional doors section

**Page 306** Wicket door for side sliding sectional doors HST 42: Product description, prices and optional extras

Available from 01.06.2023

## ALUMINIUM FRAME

Fast and easy fitting not just for renovation projects

- Reinforced construction for fitting on uneven walls
- Corrosion-resistant with anodised aluminium
- Frame completely pre-assembled before alignment and fastening to the garage wall
- Optional for all side sliding sectional doors HST 42 / HART 42



Dealer price list 01-23 A

### Side sliding sectional doors section

**Pages 288 – 305** Side sliding sectional doors HST 42

**Pages 322 – 323** Side sliding sectional doors HART 42



Dealer price list 01-23 A

### More new products in the side sliding sectional doors section

**Page 308** Set fitting bracket aluminium frame for lintel profile l = 100 mm, for extending the edge distance of the fixing points in the lintel area by 45 mm.

---

Available from 01.06.2023

## NEW SECTION WIDTHS FOR HST 42

- Changed door widths (RM width)

RM width 2625 dropped

**NEW:** RM width 2600 mm

RM width 2875 dropped

**NEW:** RM width 2850 mm

- Uniform section widths for all surface finishes
- Easier to change surface finishes during the offer phase



Dealer price list 01-23 A

### Sectional garage doors section

**Pages 286 – 287** Size tables – operator-driven version

**Pages 288 – 305** Side sliding sectional doors HST 42

# Side sliding sectional doors

Convenient, simple, transparent



Available from 01.06.2023

## ALUMINIUM FRAME DOOR HART 42

For more light and better ventilation in the garage

- 12 infill variants with glazings, grille or panels
- Symmetrical division of the door infills
- Available only with operator



Dealer price list 01-23 A  
Side sliding sectional doors section

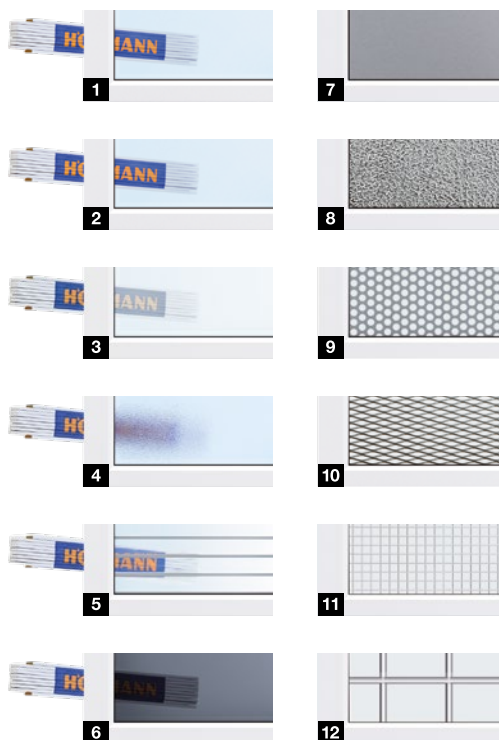
From page 316 Product description

From page 322 Size ranges and prices

From page 324 Optional extras

### Infill variants

- 1 Polycarbonate double pane, clear
- 2 Synthetic double pane, clear
- 3 Synthetic double pane, white tinted (opal / clear)
- 4 Synthetic double pane, crystal structure
- 5 Multiple-moulded pane
- 6 Synthetic double pane, grey tinted
- 7 PU sandwich infill, smooth
- 8 PU sandwich infill, Stucco
- 9 Perforated stainless steel sheet
- 10 Stainless steel expanded mesh
- 11 Crimped mesh
- 12 Welded grille



# Hinged garage doors

Practical, convenient, protected



Available from 01.06.2023

## PREMIUMPLUS DFT 42

All-round protection to minimize corrosion in coastal climates

- Section infills with final coating on the door leaf with painted cut edges
- Ribbing infill profiles for improved sealing at section transitions and in ribbing area (for S-, M- and D-ribbing)
- Available for all hinged garage doors DFT 42 with the Woodgrain, Slategrain or Silkgrain surface finishes



Dealer price list 01-23 A

### Hinged garage doors DFT 42 section

**Page 350** Product description for hinged garage doors DFT 42

**Pages 354 – 355** Hinged garage doors DFT 42 with Woodgrain, Slategrain or Silkgrain surface finish



Dealer price list 01-23 A

### More new products in the hinged garage doors DFT 42 section

**Page 350** Product description for hinged garage doors DFT 42

New Duragrain decors matching Decoral for aluminium entrance doors ThermoSafe (for illustrations see page 7)

**1** Cement

**2** Rusty Patina

**3** Barnwood

**4** Barnwood grey

**5** Wild Oak

New Malt Oak decor (for illustrations see page 8)

# Door operators and Smart Home systems

Smart, convenient, robust



Available from 01.06.2023

## WLAN GATEWAY

“Hey Google, open my door”

- Smart voice control of door operators, e.g. from the car
- Connection to Apple Home as well as Amazon Alexa and Google Home via the Hörmann Cloud “Connecting-Doors” (Amazon Skill / Google Action “Hörmann Door” is required)
- Connection to the HCP bus of compatible garage door operators, entrance gate operators and industrial door controls



Dealer price list 01-23 A  
**Door operators / gate operators section**  
Page 475 Product description and price



Available from 01.06.2023

## LOXONE GATEWAY

Building automation in residential and commercial premises

- Operation via LoXone app
- Connection to the HCP bus of compatible garage door operators, entrance gate operators and industrial door controls

# LOXONE



Dealer price list 01-23 A  
**Door operators / gate operators section**  
Page 479 Product description and price





Available from 01.06.2023

### HAND TRANSMITTER HSI 3 BS

Ideal for gardening, on a cycling or motorbike tour

- Rubberised surface with large buttons for easy operation even wearing gloves
- 3 button functions for door operators and door locks
- Robust and weather-resistant
- Always to hand thanks to belt clip and lanyard



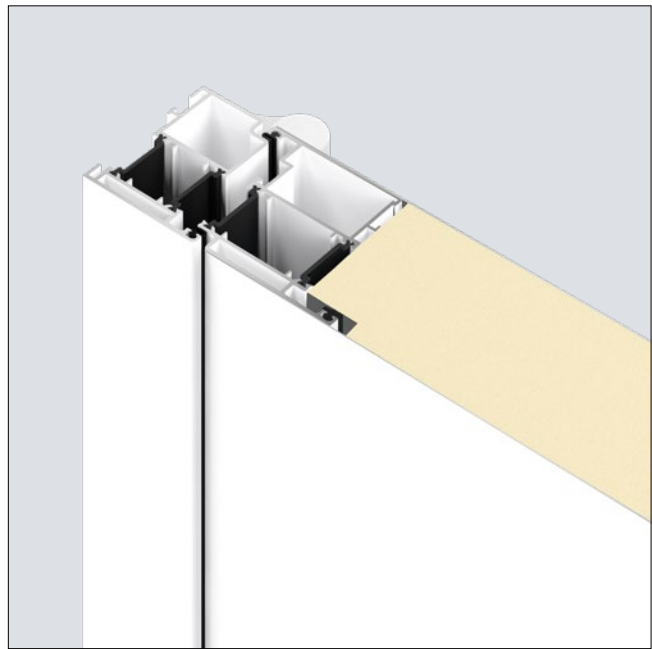
Dealer price list 01-23 A

**Door operators / gate operators section**

**Page 425** Product description and price

# Aluminium entrance doors

Elegant, safe, high quality



Available from 01.10.2023

## DOUBLE-LEAF ENTRANCE DOOR TOPCOMFORT PORTAL

More clear passage width for prestigious entrances

- Aluminium frame construction with PU foam infill and very good thermal insulation ( $U_D$ -value of up to approx.  $1.3 \text{ W}/(\text{m}^2\cdot\text{K})$ )
- Elegant door view with aluminium sheets overlapping the leaf on the exterior and interior
- Flush-fitting transition between the traffic leaf and the fixed leaf
- Door size up to 2600 mm in width and 2500 mm in height
- Available in 7 door designs, 23 preferred colours, with individual handles and glazings (one exterior handle per door leaf is included in the door price)



Dealer price list 01-23 A

### Aluminium entrance doors section

From page 780 Product description

Page 785 Style descriptions

From page 786 Sizes and prices

Page 789 Handle variant options

From page 838 Optional extras



Available from 01.06.2023

### PROTECTIVE LEVER HANDLE

**Stops pets from opening doors**

- Door opening only after approx. 87° instead of 25° as with conventional lever handles
- Door locking not required
- Comfort functions such as electric strike, code switch or finger-scan are retained
- Available for all aluminium entrance doors ThermoSafe, ThermoSafe Hybrid, ThermoPlan Hybrid and ThermoCarbon

**Only from Hörmann**  
Patent pending

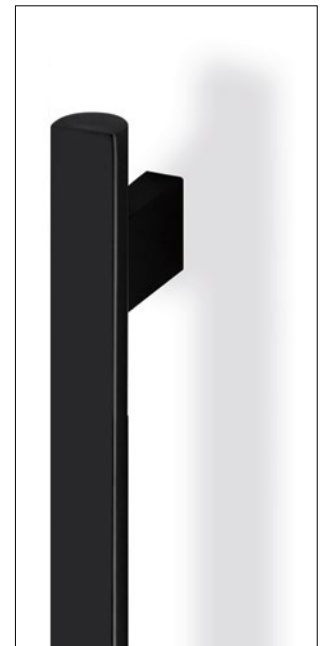


Dealer price list 01-23 A  
**Aluminium entrance doors section**

**Page 703** Interior protective lever handle  
"Pethandle"



HOE 739 in brushed stainless steel



HOE 739 in stainless steel  
with coating in RAL 9005

Available from 01.06.2023

### STAINLESS STEEL EXTERIOR HANDLE HOE 739

**Elegant design and pleasant feel**

- Brushed stainless steel or with coating in RAL 9005 Jet black (fine structure matt)
- Handle length 1703 mm with straight support bracket, Ø 33 mm
- Straight-lined design thanks to rectangular handle front panel
- Pleasant feel with rounded handle back



Dealer price list 01-23 A  
**Aluminium entrance doors section**

**Page 701** Push bars for vertical fitting on  
style surface

**From page 690** Door style / handle combination  
options for ThermoSafe,  
ThermoSafe Hybrid and  
ThermoPlan Hybrid

**From page 758** Door style / handle combination  
options for ThermoCarbon

# Aluminium entrance doors

Elegant, safe, high quality

---



Available from 01.09.2023

## FITTING GROOVE FOR INVISIBLE SCREW FITTING

High-quality door view down to the finest detail

- Beautiful profile view in the rebate area without visible screw heads
- Very easy to fit with greater choice of screws
- Factory mounting holes can be discreetly extended by on site holes
- As standard for all single-leaf entrance doors ThermoSafe, ThermoSafe Hybrid and ThermoPlan Hybrid without side elements
- For doors with fitting groove (from Q4) and HVB with electro duct KÜ 240.



Dealer price list 01-23 A

**Aluminium entrance doors section**

**From page 554**

Product description for  
ThermoSafe / ThermoSafe Hybrid /  
ThermoPlan Hybrid

### Haustür Motiv 686 – ThermoSafe / ThermoSafe Hybrid



- Griff HOE 600
- Glasausschnitt: ca. 80 × 1640
- 3-fach WSG, Motivglas, Glasaufbau:
  - Außenscheibe 8 mm, VSG klar
  - Zwischenscheibe 4 mm, Float mattiert mit 7 klaren, waagerechten Streifen
  - Innenscheibe 10 mm, VSG klar P5A (RC 3-Glas)

► **Mindestmaße: 850 × 2022 mm**

- U<sub>D</sub>-Wert bei der Größe 1230 × 2180 mm:  
ca. 0,9 W/(m<sup>2</sup>·K)

Weitere mögliche Glasvarianten finden Sie in der Tabelle auf Seite 666.

ThermoSafe	RAL 9016 M	Vorzugsfarbe	RAL nach Wahl <sup>2)</sup> / Decoral <sup>6)</sup>
Basispreis Motiv 686	€ 3441	€ 3620	€ 3800
Außengriff HOE 600 *	€ 215	€ 215	€ 215
Innendrücker Caro *	€ 47	€ 47	€ 47
<b>Gesamtpreis</b>	<b>€ 3703</b>	<b>€ 3882</b>	<b>€ 4062</b>

ThermoSafe Hybrid	RAL 9016 M	Vorzugsfarbe	RAL nach Wahl <sup>2)</sup>
Basispreis Motiv 686	€ 3771	€ 3950	€ 4130
Außengriff HOE 600 *	€ 215	€ 215	€ 215
Innendrücker Caro *	€ 47	€ 47	€ 47
<b>Gesamtpreis</b>	<b>€ 4033</b>	<b>€ 4212</b>	<b>€ 4392</b>

\* Außengriff und Innendrücker in Edelstahl (keine Farbbeschichtung)

## NEW PRICING FOR ALUMINIUM ENTRANCE DOORS

### ThermoSafe, ThermoSafe Hybrid, ThermoPlan Hybrid and ThermoCarbon

- Exterior handles, lever / knob and lever handle sets as well as interior levers no longer attract a surcharge!
- On the individual style pages of the price list, the door price is shown as the basic price of the door, exterior handle and interior lever. If the handle or lever handle is changed, the specified standard handle price must be deducted and replaced by the price of the preferred option.



Dealer price list 01-23 A

#### Aluminium entrance doors section

- From page 568** ThermoSafe / ThermoSafe Hybrid
- From page 649** ThermoPlan Hybrid
- From page 690** Door style / handle combination options for ThermoSafe, ThermoSafe Hybrid and ThermoPlan Hybrid
- From page 729** ThermoCarbon
- From page 758** Door style / handle combination options for ThermoCarbon entrance doors

## NEW PRICING FOR ALUMINIUM ENTRANCE DOORS

### TopComfort with extensive glazing

- Exterior handles, lever / knob and lever handle sets are no longer surcharged items!
- The stated prices for single- and double-leaf entrance doors TopComfort do not include exterior handles from 01.06.2023.
- An interior lever “Rondo” in RAL 9016 is included in the price



Dealer price list 01-23 A

#### Aluminium entrance doors section

- From page 792** Aluminium entrance doors TopComfort style 100 with design glass
- From page 796** Aluminium entrance doors TopComfort, single-leaf with triple glazing
- From page 800** Aluminium entrance doors TopComfort, single-leaf with double glazing
- From page 804** Aluminium entrance doors TopComfort, double-leaf with triple glazing
- From page 808** Aluminium entrance doors TopComfort, double-leaf with double glazing
- From page 836** Handle and lever handle for TopComfort aluminium entrance doors

# Steel / aluminium entrance doors

Elegant, transparent, straight



Available from 01.06.2023

## ENTRANCE DOOR THERMO65, STYLE 630S

For bright hallways and entrance areas

- Very good thermal insulation with a  $U_D$ -value of up to approx.  $1.0 \text{ W}/(\text{m}^2 \cdot \text{K})$
- Large, frameless glazing cut-out
- Satinato glazing
- Stainless steel handle HB 38-2



Dealer price list 01-23 A

**Thermo65 entrance doors section**

**From page 506** Product description

**Page 519** Style description and prices

**From page 523** Optional extras



Available from 01.06.2023

## STAINLESS STEEL EXTERIOR HANDLE HB 739

Elegant design and pleasant feel

- Brushed stainless steel
- Handle length 1703 mm
- Straight-lined design thanks to rectangular handle front panel
- Pleasant feel with rounded handle back
- Matched to the glazing height of styles THP 700 and THP 750
- Available for Thermo65 styles THP 010, THP 600, THP 700, THP 750 and THP 800



Dealer price list 01-23 A

**Thermo65 entrance doors section**

**Page 523** Description and price



Available from 01.06.2023

## WALKWAY DOOR, STYLE 610S / 610N

More light in flats in buildings with walkways

- Excellent acoustic insulation up to 42 dB with threshold, up to 37 dB with retractable bottom seal
- Very good thermal insulation with a  $U_D$ -value of up to approx.  $1.0 \text{ W}/(\text{m}^2\cdot\text{K})$
- Optional RC 2 security features
- Frameless glazing cut-out
- THP 610 S with Satinato or THP 610 N with one-way plate glass
- Optionally with side element (acoustic insulation as standard with 37 dB or acoustic-rated glazing with 42 dB)



Dealer price list 01-23 A

### Thermo65 entrance doors section

- From page 506** Product description
- From page 509** Acoustic insulation product description
- Page 519** Style description and prices
- From page 523** Optional extras



Dealer price list 01-23 A

### More new products in the Thermo 46 entrance doors section

- Page 498**
  - Door closer TS 5000 ECLine for fitting on opening side (hinge side)
  - Door closer TS 5000 L ECLine for fitting on closing side (opposite hinge side)
  - Silver-coloured mechanical hold-open device, with 60 mm travel
  - Reinforcement in door leaf for mechanical hold-open device
- Page 503**
  - Embellishment in black.edition view 400 for styles TPS 015 and TPS 515



Dealer price list 01-23 A

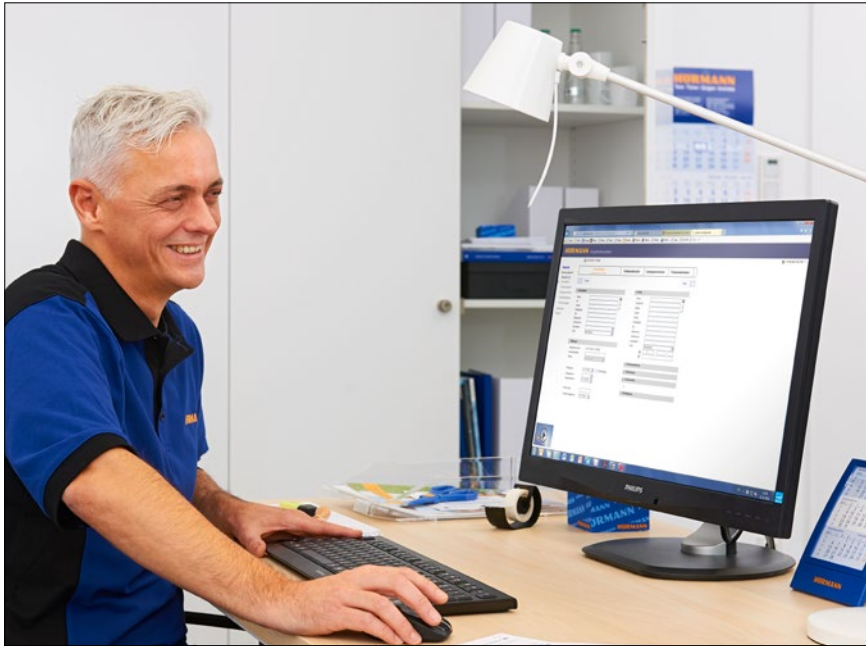
### More new products in the Thermo 65 entrance doors section

- Page 529**
  - Lever / knob handle set, rose escutcheon
  - Prepared for profile cylinder knob K-160 / lever handle type D-110
- Page 535**
  - Door closer TS 5000 ECLine for fitting on opening side (hinge side)
  - Door closer TS 5000 L ECLine for fitting on closing side (opposite hinge side)
  - Silver-coloured mechanical hold-open device, with 60 mm travel
  - Reinforcement in door leaf for mechanical hold-open device
- Page 537**
  - Side element / transom light with acoustic insulation class 3 (42 dB)
- Page 537**
  - Style 610S
  - Fire resistance class: EI<sub>2</sub>30-C5
  - Smoke protection S200 with threshold
  - With handle HB 14-2 or HB 38-2
- Page 540**
  - Embellishment in black.edition view 400 for styles THP 015 and THP 515

# Digital sales support

Simple, transparent, individual

---



## DIGITAL TOOLS

**For specialists, architects and planners**

From the e-shop for spare parts and accessories to the quotation and order system iHAAS with configurator to the order portal HAIP with detailed order and delivery information, we offer our sales partners comprehensive digital tools for simple, transparent order processing. The product portal for architects and planners offers texts for invitation to tenders, drawings, BIM data and documents. And we generate more sales for our reference dealers through the Leadtributor with current end customer enquiries.

Some of the products shown are equipped with optional extras and do not always match our standard models. The surface finishes and colours shown are subject to the limitations of the printing process and cannot be regarded as binding. All rights reserved. No part may be reproduced without our prior permission. Subject to changes.

