

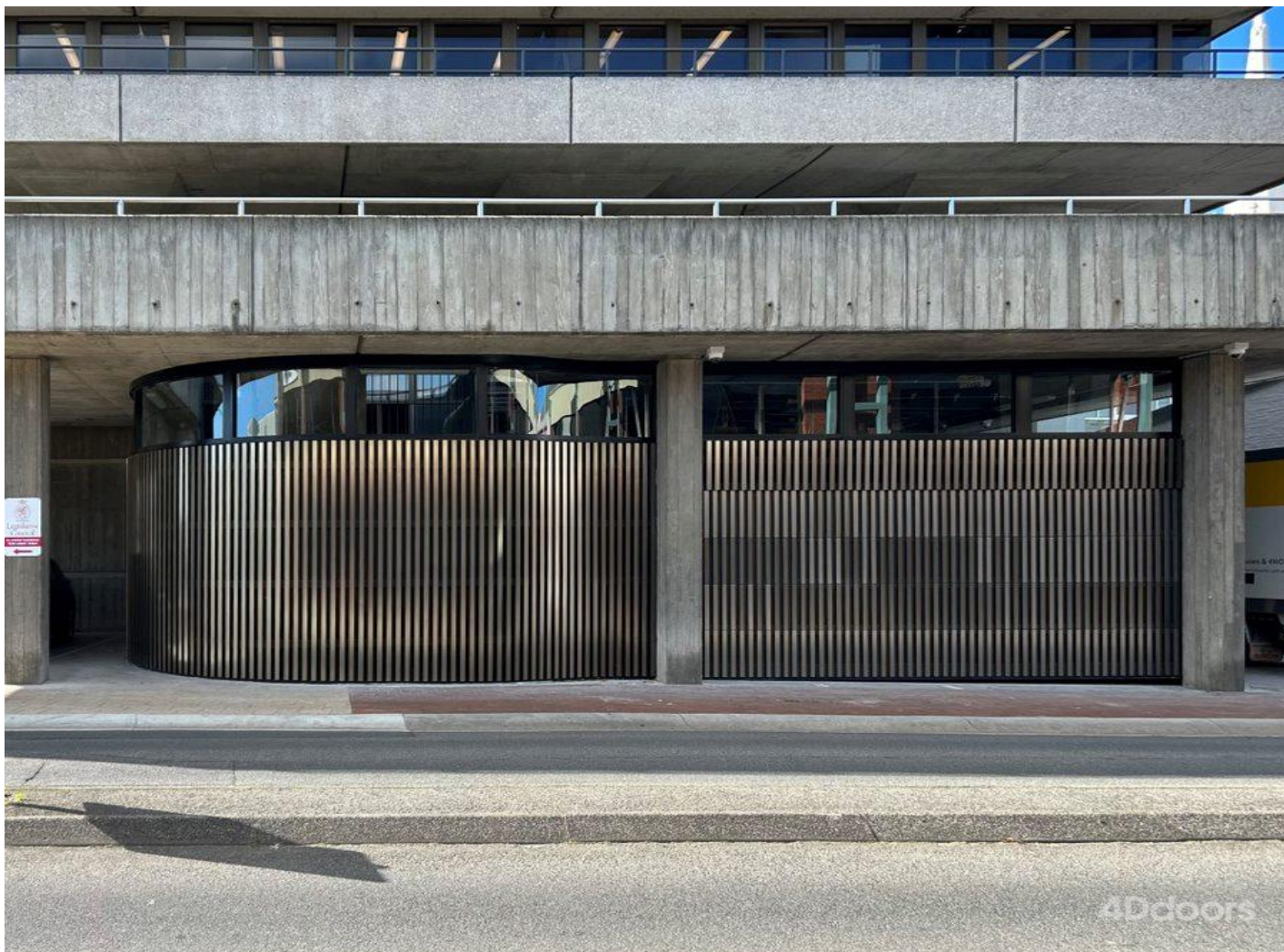
Reference Projects

4Ddoors

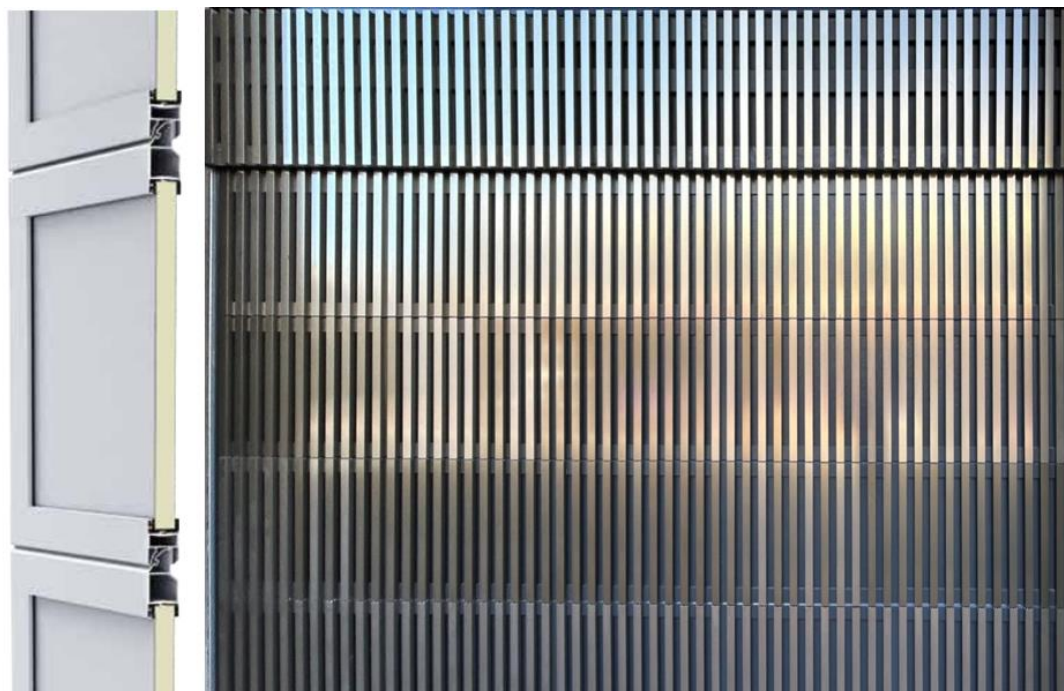
GARAGE DOORS REDEFINED

➤ Project name	Henty House Launceston
➤ Year of construction	2023
➤ Location	Prospect Tasmania Australia
➤ Construction type	Commercial
➤ Owner / Builder / Developer	Shape Australia PTY LTD (ACT)
➤ Architect	GHD Design
➤ 4Ddoors Dealer	Garage Door Solutions TAS
➤ 4Ddoors Product	ALR F42 Sectional Garage Door Series 60
➤ 4Ddoors Product specification	26mm Aluminium, PU Infill, Polyester-Primer Coating, RAL 7016 Anthracite Grey 2300mm x 5610mm
➤ 4Ddoors Automation	4D GA403v3 German Professional Range Opener
➤ Functionality/purpose of 4Ddoors product	Flush fitting façade integration
➤ Value of finished door solution	Range \$50,000 - \$60,000
➤ Total Construction Value	Total Construction works estimated between \$2m-\$3m
➤ Link to Hörmann Industrial Sectional brochure	4Ddoors-Hormann-Sect-Industrial.pdf





ALR F42 Aluminium Sectional Doors for On-Site Cladding – Dimensions 5510mm x 2300mm



- Frame profiles with PU sandwich infill
- With horizontal profiles for cladding fitting
- For flush-fitting cladding made of timber, metal and many other materials

For more information, please contact office@4ddoors.com visit [4Ddoors - Garage Doors Redefined | 4Ddoors](#)

or Hörmann Architect program [Hörmann Architect's Programme - Exclusion of liability \(hoermann.de\)](#)